

# Camping Trailer 2018



# Jayco®

Generations of family fun.



BAJA EDITION

**2**  
YEAR  
LIMITED  
WARRANTY

ALL NEW INTERIOR DÉCOR



12SC INTERIOR



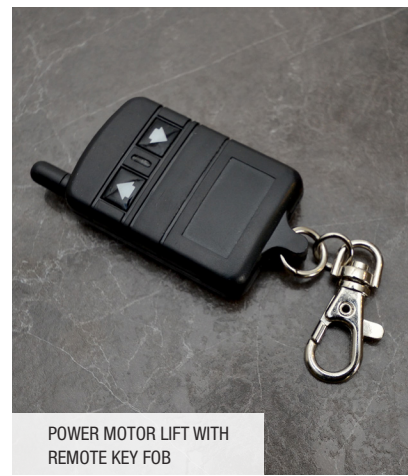
HINGED GALLEY FOR REFRIGERATOR AND STORAGE ACCESS WITH ROOF DOWN



COLLAPSIBLE HANGING WARDROBE/ SHELF COMBO



EXTERIOR STORAGE BOX (12SC ONLY)



POWER MOTOR LIFT WITH REMOTE KEY FOB

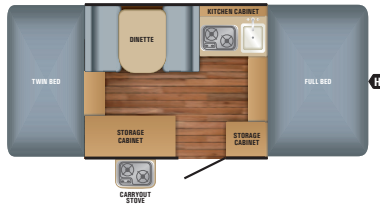


12SC BAJA EDITION



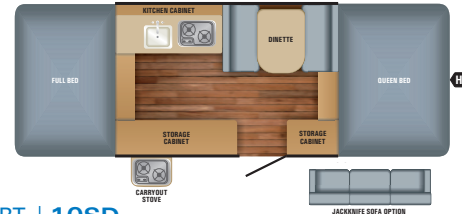
10SD WITH SCREEN ROOM

# FLOORPLANS



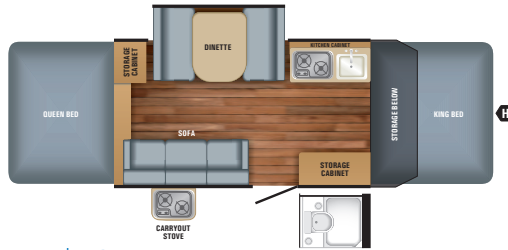
## JAY SPORT | 8SD

Ext. Length: 11' 7" Travel Ht: 58" Unloaded Wt. (lbs): 1,570 Sleeps: 5-6



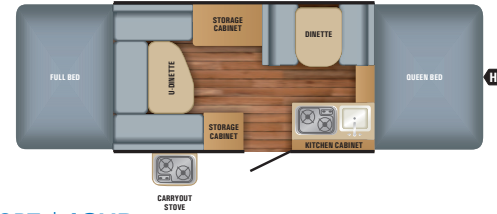
## JAY SPORT | 10SD

Ext. Length: 13' 6" Travel Ht: 58" Unloaded Wt. (lbs): 1,720 Sleeps: 5-6



## JAY SPORT | 12SC

Ext. Length: 18' 7" Travel Ht: 59" Unloaded Wt. (lbs): 2,385 Sleeps: 6-7



## JAY SPORT | 12UD

Ext. Length: 15' 6" Travel Ht: 58" Unloaded Wt. (lbs): 1,875 Sleeps: 6-7

# SPECS

MODELS	DIMENSIONS				WEIGHT (LBS.)				TANKS (GALS.)			
	FLOORPLAN	EXTERIOR LENGTH	CAMPSITE LENGTH	EXTERIOR WIDTH	TRAVEL HEIGHT	UNLOADED VEHICLE WEIGHT	DRY HITCH WEIGHT	GROSS VEHICLE WEIGHT RATING	CARGO CARRYING CAPACITY	FRESH WATER CAPACITY	GREY WASTE WATER CAPACITY	BLACK WASTE WATER CAPACITY
8SD	11' 7"	16' 2"	85"	85"	58"	1,570	215	2,250	680	28.2	N/A	N/A
10SD	13' 6"	19' 6"	85"	85"	58"	1,720	145	2,400	680	28.2	N/A	N/A
12SC	18' 7"	23' 3"	85"	85"	59"	2,385	285	3,375	990	28.2	N/A	5"
12UD	15' 6"	21' 6"	85"	85"	58"	1,875	225	2,750	875	28.2	N/A	N/A

\*With optional bath/shower

**Unloaded Vehicle Weight (UUV):** Sometimes referred to as "Dry Weight," UUV means the typical weight of this trailer as built at the factory. The UUV, as used in product literature and other promotional materials, does not include cargo, fresh water, propane, options or dealer-installed accessories.

**Gross Vehicle Weight Rating (GVWR):** GVWR means the maximum permissible weight of the trailer, including the UUV plus personal items, all cargo, fluids, options and dealer-installed accessories. The GVWR is equal to or greater than the sum of the UUV and the CCC.

**Cargo Carrying Capacity (CCC):** CCC means the maximum weight of personal items, food, fresh water, propane, tools, other cargo and dealer-installed accessories that can be carried by the trailer. CCC is equal to or less than GVWR minus UUV. The addition of options will decrease the CCC.

**Hitch Weight (HW):** The hitch weight, as used in product literature and other promotional materials, does not include cargo, fresh water, propane gas, options or dealer-installed accessories. The addition of these types of items will either add to or subtract from the stated hitch weight.

It is important for your safety and enjoyment that your tow vehicle be adequately sized and equipped to tow and handle the GVWR of the RV you select. Review weights and rating of your tow vehicle and consult a competent advisor for questions or advice. Whether you are new to RVing or a veteran, get a feel for the performance of your tow vehicle before heading out on the roadways. When you tow an RV, you must drive differently than when you drive a single vehicle. Practice hooking up, driving, backing up and braking in a safe environment or seek out professional instruction. Jayco affixes a weight label to each RV which lists weight information for that vehicle. See specifications chart above.

# STANDARDS AND OPTIONS

## STANDARD EXTERIOR EQUIPMENT

- Heavy-duty, corrosion-resistant frame construction
- Integrated A-frame by Norco®
- One-piece wooden floor deck wrapped with Poly Flex™ underbelly material
- Scratch-resistant, embossed-aluminum exterior finish
- Domed, seamless fiberglass roof and mildew-resistant aluminum ceiling
- Easy-to-use lifter system with extra-wide lifter posts integrated into tent
- DuraTek™ water-repellent sectionalized tent with 1,050-pound-rated beds
- Removable bed braces with storage bag
- One-piece entrance door with self-storing screen door
- Retractable aluminum step(s)
- 12-inch E-range tires (8SD, 10SD, 12UD)
- 14-inch C-range tires (12SC)
- E-Z Lube® axles with leaf-spring suspension
- 12V electrical system with 110V converter
- 30-amp power cord
- Prep wiring for battery
- Bumper-welded steel construction
- Leveling tongue jack
- City water hookup
- 120V GFCI-protected exterior receptacle
- 20-pound propane gas bottle

## STANDARD INTERIOR EQUIPMENT

- Residential cabinetry with doors and drawers
- Ball-bearing drawer guides with 75-pound capacity
- Acrylic sink and faucet
- Hinged galley in all models with refrigerator and storage access when roof closed
- Interior hookup for freestanding TV
- Appliances pre-plumbed for propane
- Stainless steel, indoor/outdoor stove with wind deflectors
- Reversible dinette cushions
- Tinted vinyl windows with fine-mesh screening
- Porta-potti storage cabinet
- Wall-to-wall Beauflor® vinyl flooring
- Auxiliary 12V jack and privacy curtains for bunk ends
- Stereo prepped and wired

## CUSTOMER VALUE PACKAGE

- 28-gallon water tank with demand water pump
- Canopy awning
- 2-cubic-foot, 3-way gas/electric refrigerator (110V/12V/propane)
- A/C prep
- Bunk lights with fans (2)
- Electric brakes
- Spare tire
- Stabilizer jacks with sand pads (4)
- Front/rear black diamond plating

## BAJA PACKAGE

- 15-inch off-road Goodyear® mud tires (12SC, 12UD)
- 5-inch ground clearance
- Double entry step

## OPTIONS

- Customer Value Package (mandatory)
- Baja Package
- Deluxe Plumbing Package: 6-gallon water heater and outside shower (12SC, 12UD) (required with bath/shower option on 12SC)
- Bath/shower with curtain in lieu of storage cabinet (12SC)
- Hanging wardrobe/shelf combo
- Porta-potti (n/a with bath/shower option in 12SC)
- Jackknife sofa in lieu of storage cabinet (10SD)
- AM/FM stereo with speakers
- 16,000-BTU furnace
- Powered 14-inch x 14-inch roof vent
- Front black diamond plate storage box with side-entry doors (12SC)
- Deluxe screen room with privacy panels (10- or 12-foot)
- Exterior grill
- 4-inch heated bed mats
- Aluminum rims
- Power lift system with remote key fob



Scan the QR code to learn more about Jayco Camping Trailers

# 5-YEAR WARRANTIES



## LIFTER SYSTEM

Featuring extra-wide lifter posts and flexible push-rods, our lifter system is built to last and super easy to use.



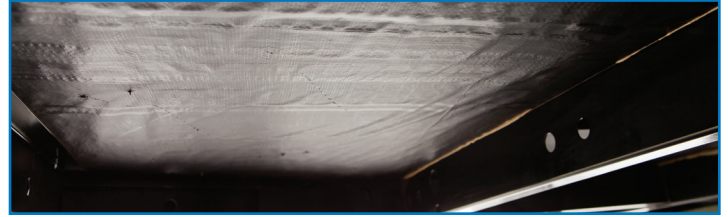
## BED PLATFORM

Our two-piece, extruded aluminum bed frame features half-inch decking and heavy-duty supports—holding up to 1,050 pounds.



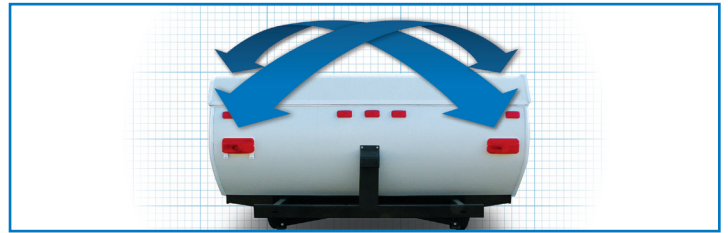
## TENTS

Water-repellent, sectionalized DuraTek™ tents feature a mildew-resistant backer and tinted vinyl windows with cold-crack coverage to -20° F and interior UV protection.



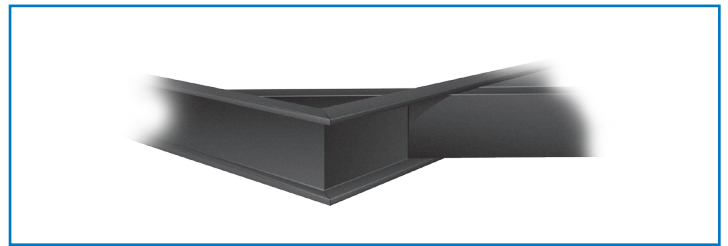
## FLOOR

Our one-piece, wooden floor deck with water-resistant Poly Flex™ material is the strongest in the industry. Glue and screws double bond the floor to the frame for extra-mile durability.



## ROOF

A one-piece, fiberglass roof features a unique dome design for better water runoff and superior leak prevention.



## FRAME

Powder-coated to prevent corrosion, Jayco's custom-built, integrated A-frame is built for the long haul—and designed to prevent buckling and torque during towing.



**valley RV  
Supercenter**

619 Washington Ave N  
Kent WA 98032  
888-260-4509

info@valleyrvsupercenter.com  
www.valleyrvsupercenter.com

Follow Jayco



Jayco, Inc. | P.O. Box 460 | Middlebury, IN 46540  See dealer for further information and prices. All information in this brochure and on [www.jayco.com](http://www.jayco.com) is the latest available at the time of publication approval. Jayco reserves the right to make changes and to discontinue models without notice or obligation. Photography may show optional equipment or props used for decoration purposes only. RVs built for sale in Canada may differ to conform to Canadian codes. JAYCO and the JAYCO BIRD IN FLIGHT are registered trademarks of Jayco, Inc. Printed in USA 40K 07/17 ©2017 Jayco, Inc. 274772

## Travel with Confidence

**2**  
YEAR  
LIMITED  
WARRANTY

At Jayco, we build our RVs to handle every adventure, then back them with our industry-leading 2-year limited warranty. We, with support from our select partners, have you covered for **2 camping seasons**. That's **730 days**. You won't find a better warranty in the business, because the only strings we attach are those that deliver the ultimate in reliability. That's the Jayco difference. So go explore. We have the warranty that will follow you anywhere. For a copy of our 2-year limited warranty with complete terms and conditions, please contact your local Jayco dealer.

## eco advantage™

Jayco's long-term commitment to generations of family fun

After six years of increased efforts to eliminate waste, conserve energy and increase recycling, we've come a long way in building RVs that are not only better for your family—but also better for the planet. Learn more at [Jayco.com/EcoAdvantage](http://Jayco.com/EcoAdvantage)